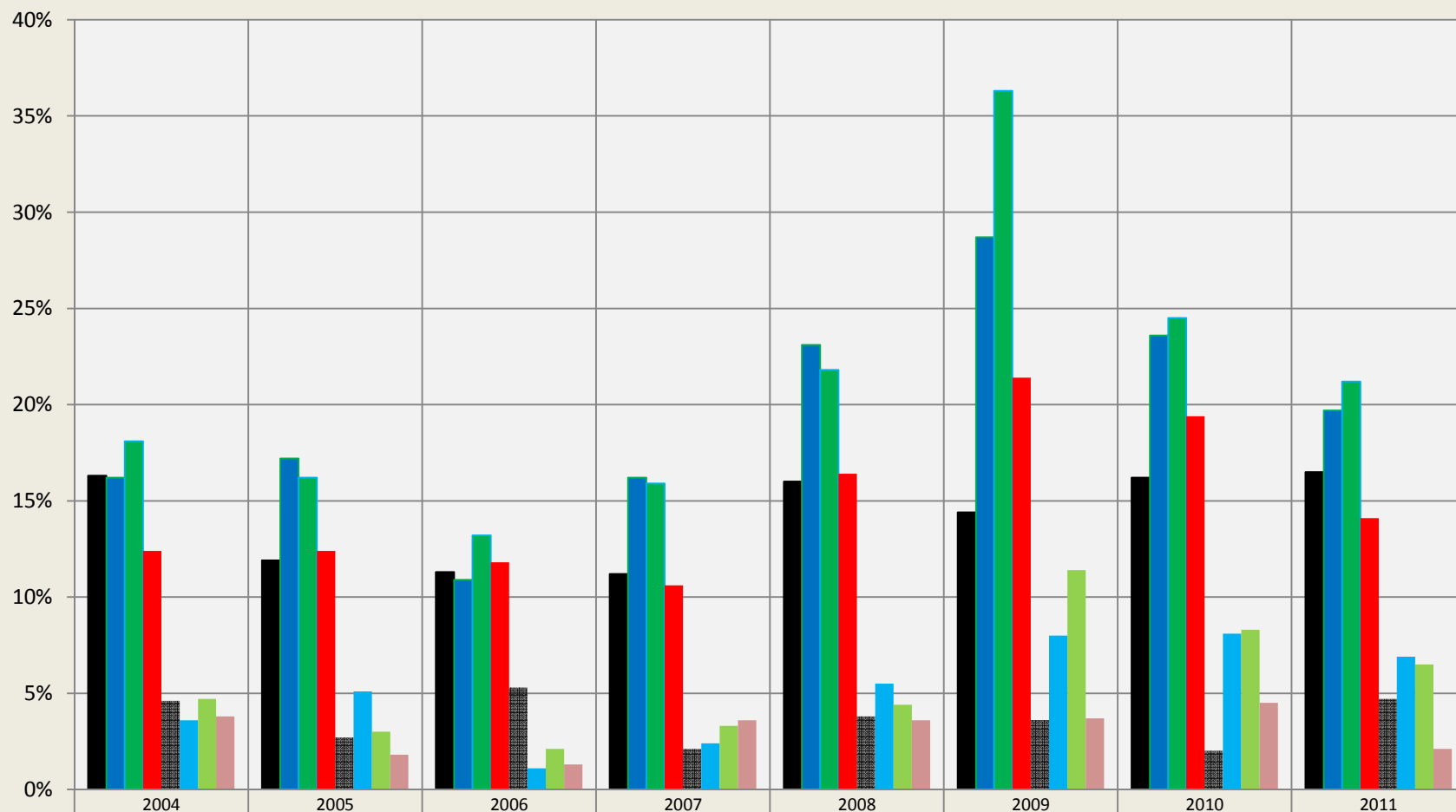


# Westminster: Houses/Condos Under Contract within 14 & 5 Days

Sales through MLS System Only: Excluding New Construction



	2004	2005	2006	2007	2008	2009	2010	2011
■ Large Houses 14 Days	16.3%	11.9%	11.3%	11.2%	16.0%	14.4%	16.2%	16.5%
■ Mid-Sized Houses 14 Days	16.2%	17.2%	10.9%	16.2%	23.1%	28.7%	23.6%	19.7%
■ Small Houses 14 Days	18.1%	16.2%	13.2%	15.9%	21.8%	36.3%	24.5%	21.2%
■ Condo/Townhouse 14 Days	12.4%	12.4%	11.8%	10.6%	16.4%	21.4%	19.4%	14.1%
■ Large Houses 5 Days	4.6%	2.7%	5.3%	2.1%	3.8%	3.6%	2.0%	4.7%
■ Mid-Sized Houses 5 Days	3.6%	5.1%	1.1%	2.4%	5.5%	8.0%	8.1%	6.9%
■ Small Houses 5 Days	4.7%	3.0%	2.1%	3.3%	4.4%	11.4%	8.3%	6.5%
■ Condo/Townhouse 5 Days	3.8%	1.8%	1.3%	3.6%	3.6%	3.7%	4.5%	2.1%

Compiled by Agents for Home Buyers LLC

[www.Agents4HomeBuyers.com](http://www.Agents4HomeBuyers.com)

Data Source: IRES MLS

Time to Contract for 2300-3000, 1600-2300, & 900-1600 sqft Houses and 800-1600 sqft Condos/Townhomes (not including basement).