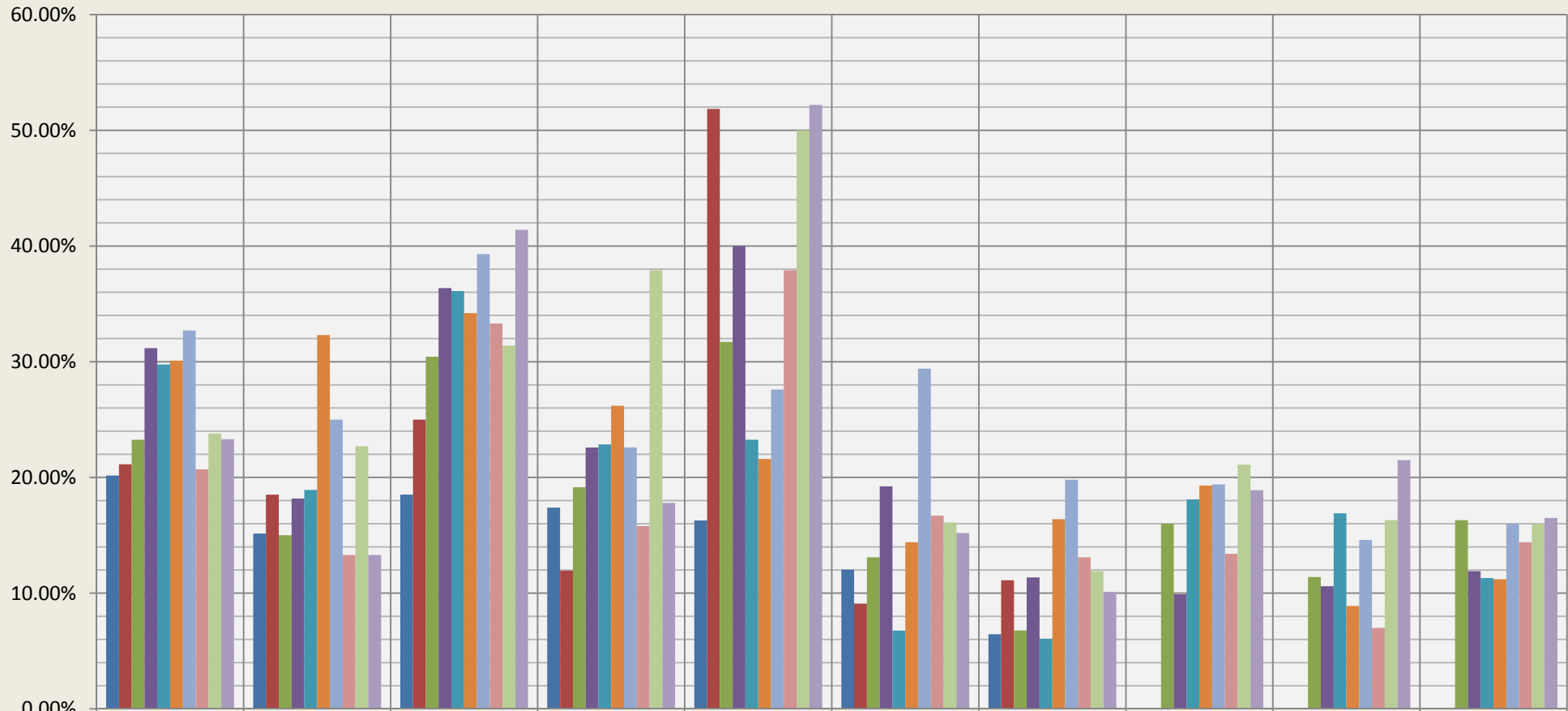


Contract in 14 Days or Less: Large Houses

Sales through MLS System Only: Excluding New Construction



	Boulder	Gunbarrel	Louisville	Lafayette	Superior	Longmont	Erie	Arvada	Broomfield	Westminster
■ 2002	20.2%	15.2%	18.5%	17.4%	16.3%	12.0%	6.5%			
■ 2003	21.1%	18.5%	25.0%	11.9%	51.9%	9.1%	11.1%			
■ 2004	23.3%	15.0%	30.4%	19.1%	31.7%	13.1%	6.8%	16.0%	11.4%	16.3%
■ 2005	31.2%	18.2%	36.4%	22.6%	40.0%	19.2%	11.4%	9.9%	10.6%	11.9%
■ 2006	29.8%	18.9%	36.1%	22.9%	23.3%	6.8%	6.1%	18.1%	16.9%	11.3%
■ 2007	30.1%	32.3%	34.2%	26.2%	21.6%	14.4%	16.4%	19.3%	8.9%	11.2%
■ 2008	32.7%	25.0%	39.3%	22.6%	27.6%	29.4%	19.8%	19.4%	14.6%	16.0%
■ 2009	20.7%	13.3%	33.3%	15.8%	37.9%	16.7%	13.1%	13.4%	7.0%	14.4%
■ 2010	23.8%	22.7%	31.4%	37.9%	50.0%	16.1%	11.9%	21.1%	16.3%	16.0%
■ 2011	23.3%	13.3%	41.4%	17.8%	52.2%	15.2%	10.1%	18.9%	21.5%	16.5%

Compiled by Agents for Home Buyers LLC www.Agents4HomeBuyers.com Data Sources: IRES & Metrolist MLS

Percentage of resale homes with offer made and accepted within 14 days of MLS listing. Large Houses = 2300-3000 sqft excluding basement.