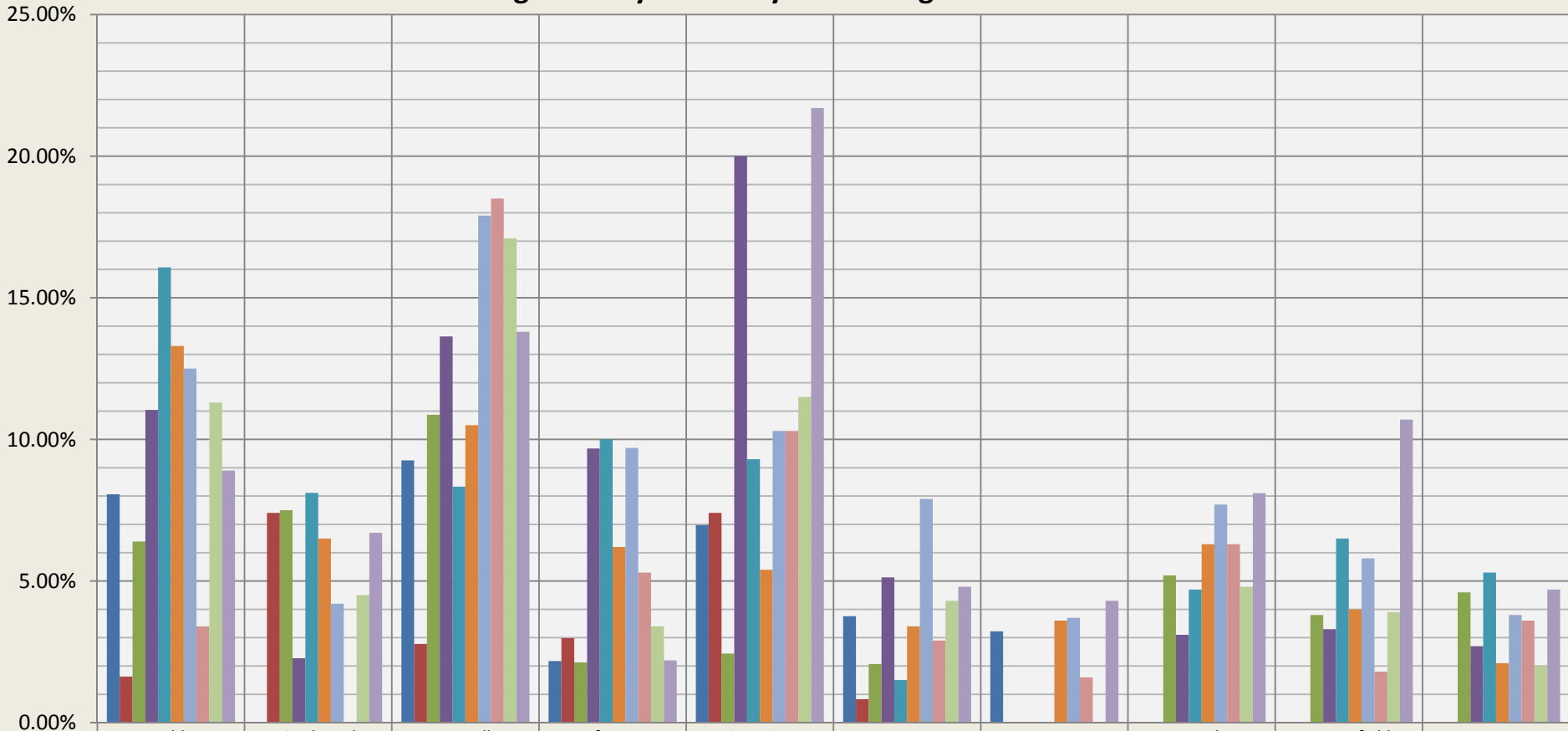


Contract in 5 Days or Less: Large Houses

Sales through MLS System Only: Excluding New Construction



	Boulder	Gunbarrel	Louisville	Lafayette	Superior	Longmont	Erie	Arvada	Broomfield	Westminster
2002	8.1%	0.0%	9.3%	2.2%	7.0%	3.8%	3.2%			
2003	1.6%	7.4%	2.8%	3.0%	7.4%	0.8%	0.0%			
2004	6.4%	7.5%	10.9%	2.1%	2.4%	2.1%	0.0%	5.2%	3.8%	4.6%
2005	11.0%	2.3%	13.6%	9.7%	20.0%	5.1%	0.0%	3.1%	3.3%	2.7%
2006	16.1%	8.1%	8.3%	10.0%	9.3%	1.5%	0.0%	4.7%	6.5%	5.3%
2007	13.3%	6.5%	10.5%	6.2%	5.4%	3.4%	3.6%	6.3%	4.0%	2.1%
2008	12.5%	4.2%	17.9%	9.7%	10.3%	7.9%	3.7%	7.7%	5.8%	3.8%
2009	3.4%	0.0%	18.5%	5.3%	10.3%	2.9%	1.6%	6.3%	1.8%	3.6%
2010	11.3%	4.5%	17.1%	3.4%	11.5%	4.3%	0.0%	4.8%	3.9%	2.0%
2011	8.9%	6.7%	13.8%	2.2%	21.7%	4.8%	4.3%	8.1%	10.7%	4.7%

Compiled by Agents for Home Buyers LLC www.Agents4HomeBuyers.com Data Sources: IRES & Metrolist MLS
 Percentage of resale homes with offer made and accepted within 5 days of MLS listing. Large Houses = 2300-3000 sqft excluding basement.