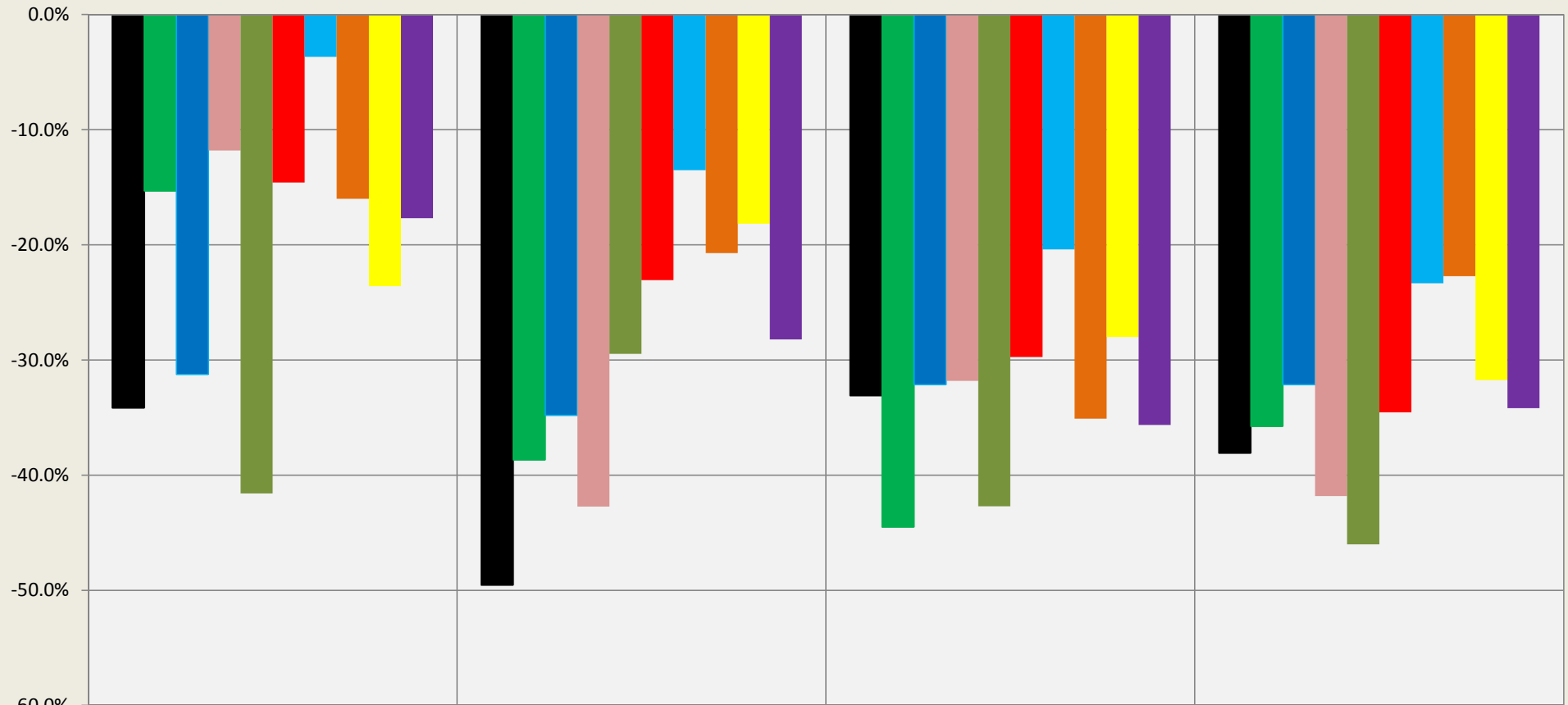


Number of Sales Mid-Sized Houses: 2008, 2009, 2010 & 2011 vs. Average for 2004-2007

Sales through MLS System Only: New Construction Excluded



	2008 vs.2004-07	2009 vs. 2004-2007	2010 vs.2004-2007	2011 vs.2004-2007
■ Boulder	-34.2%	-49.6%	-33.1%	-38.1%
■ Gunbarrel	-15.3%	-38.7%	-44.5%	-35.8%
■ Louisville	-31.3%	-34.8%	-32.1%	-32.1%
■ Lafayette	-11.8%	-42.7%	-31.8%	-41.8%
■ Superior	-41.6%	-29.5%	-42.7%	-46.0%
■ Longmont	-14.6%	-23.1%	-29.7%	-34.6%
■ Erie	-3.7%	-13.5%	-20.4%	-23.3%
■ Arvada	-16.0%	-20.7%	-35.1%	-22.7%
■ Broomfield	-23.6%	-18.2%	-28.0%	-31.7%
■ Westminster	-17.7%	-28.2%	-35.6%	-34.2%

Compiled by Agents for Home Buyers LLC

www.Agents4HomeBuyers.com

Data: Metrolist MLS & IRES MLS

Chart based on median price-per sqft of 1600-2300 sqft homes. Basement sqft not included in calculations.