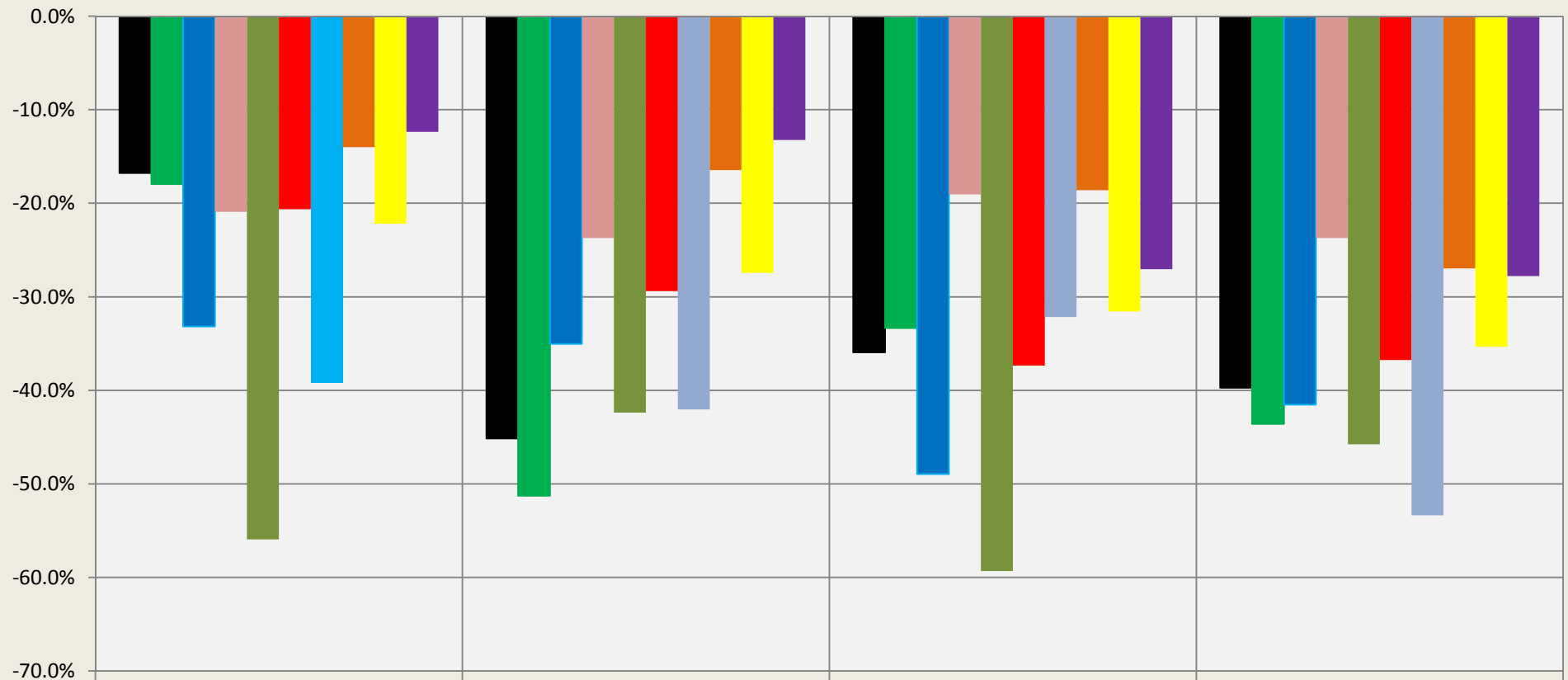


Number of Sales Small Houses: 2008, 2009, 2010 & 2011 vs Average for 2004-2007

Sales through MLS Only: New Construction Excluded



	2008 vs.2004-07	2009 vs. 2004-2007	2010 vs.2004-2007	2011 vs.2004-2007
■ Boulder	-16.8%	-45.1%	-35.9%	-39.7%
■ Gunbarrel	-17.9%	-51.3%	-33.3%	-43.6%
■ Louisville	-33.2%	-35.0%	-49.0%	-41.5%
■ Lafayette	-20.9%	-23.7%	-19.1%	-23.7%
■ Superior	-55.9%	-42.4%	-59.3%	-45.8%
■ Longmont	-20.6%	-29.4%	-37.3%	-36.7%
■ Erie	-39.2%	-42.0%	-32.2%	-53.4%
■ Arvada	-14.0%	-16.5%	-18.6%	-27.0%
■ Broomfield	-22.2%	-27.4%	-31.6%	-35.3%
■ Westminster	-12.4%	-13.2%	-27.1%	-27.8%

Compiled by Agents for Home Buyers LLC

www.Agents4HomeBuyers.com

Data: Metrolist MLS & IRES MLS

Chart based on median price-per sqft of 900-1600 sqft homes. Basement sqft not included in calculations.