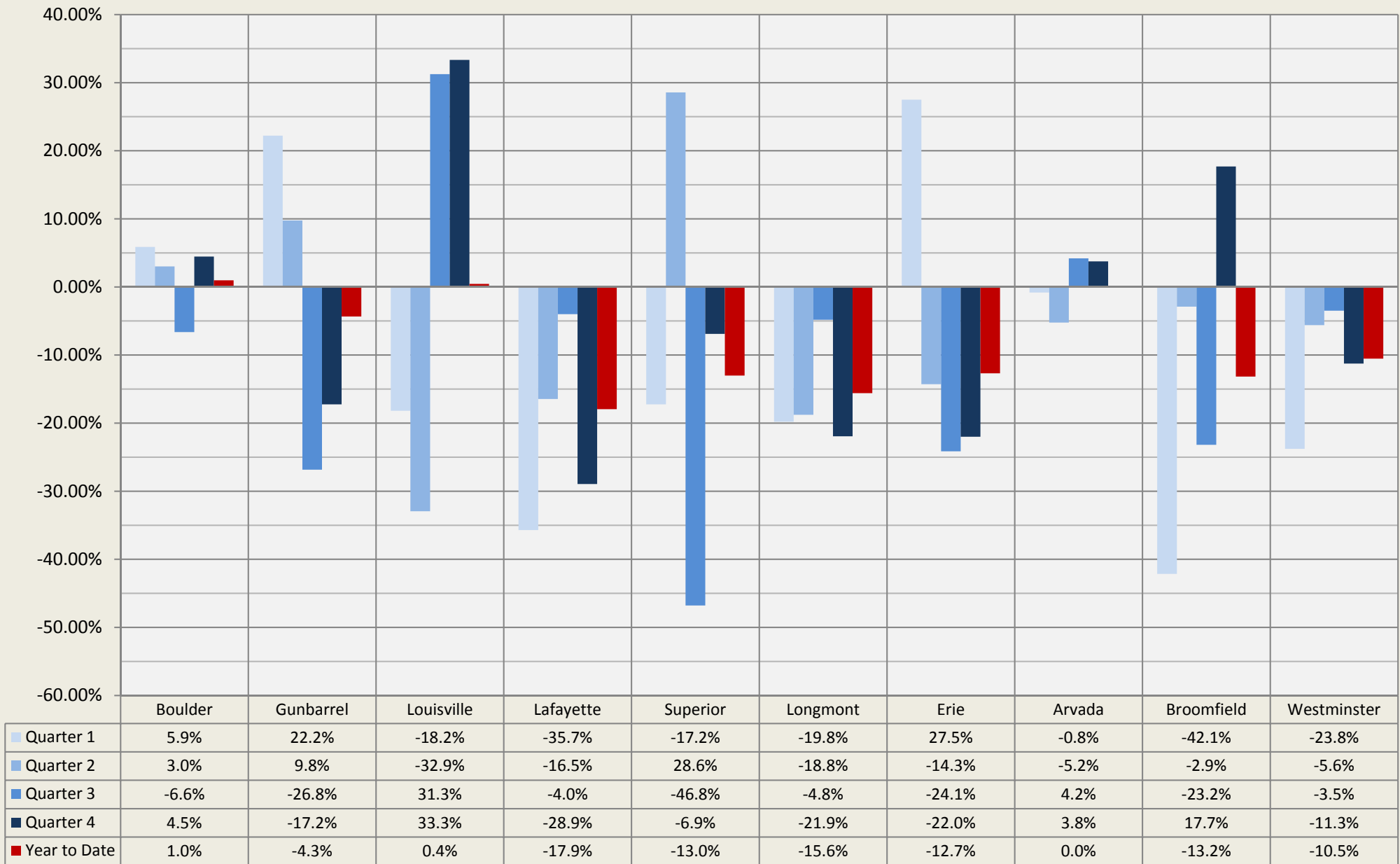


Number of Sales Quarterly - Mid-Sized Houses: 2011 vs. Average of 2008/2009/2010

Sales through MLS System Only: New Construction Excluded



Compiled by Agents for Home Buyers LLC www.Agents4HomeBuyers.com

Data Sources: IRES & Metrolist MLS

Percent increase/decrease in number of sales of resale homes by quarter & year to date. Mid-Sized Houses = 1600-2300 sqft excluding basement.