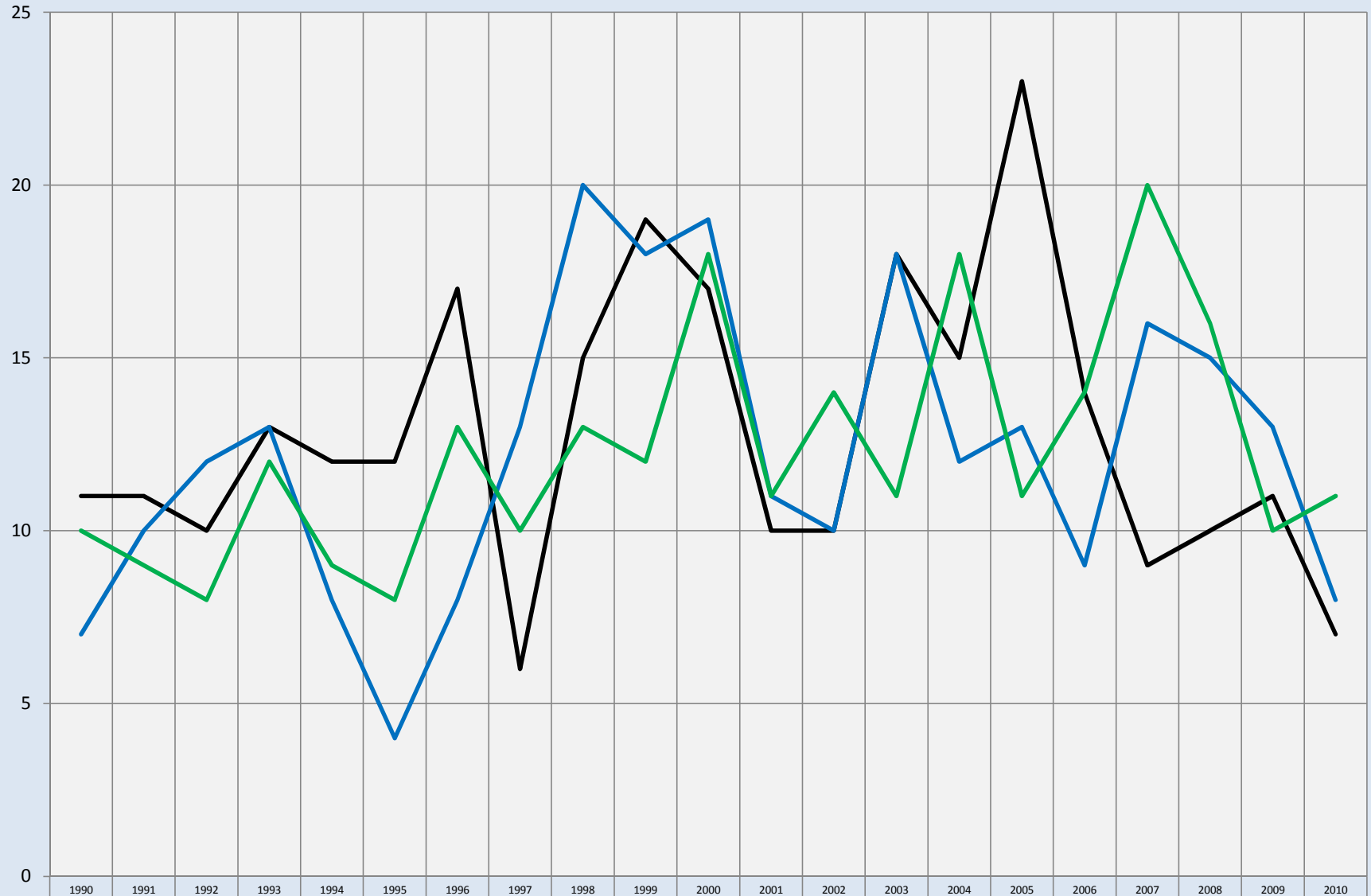


# Niwot: Number of Sales Annually

All Recorded Sales: Data from Tax Records



— Large Houses	11	11	10	13	12	12	17	6	15	19	17	10	10	18	15	23	14	9	10	11	7
— Mid-Sized Houses	7	10	12	13	8	4	8	13	20	18	19	11	10	18	12	13	9	16	15	13	8
— Small Houses	10	9	8	12	9	8	13	10	13	12	18	11	14	11	18	11	14	20	16	10	11

Compiled by Agents for Home Buyers LLC

[www.Agents4HomeBuyers.com](http://www.Agents4HomeBuyers.com)

Sources: Metrolist Tax Data

Number of sales for large (2300-3000 sqft), mid-sized (1600-2300 sqft), & small (900-1600 sqft) houses . Basement sqft not included in calculations.