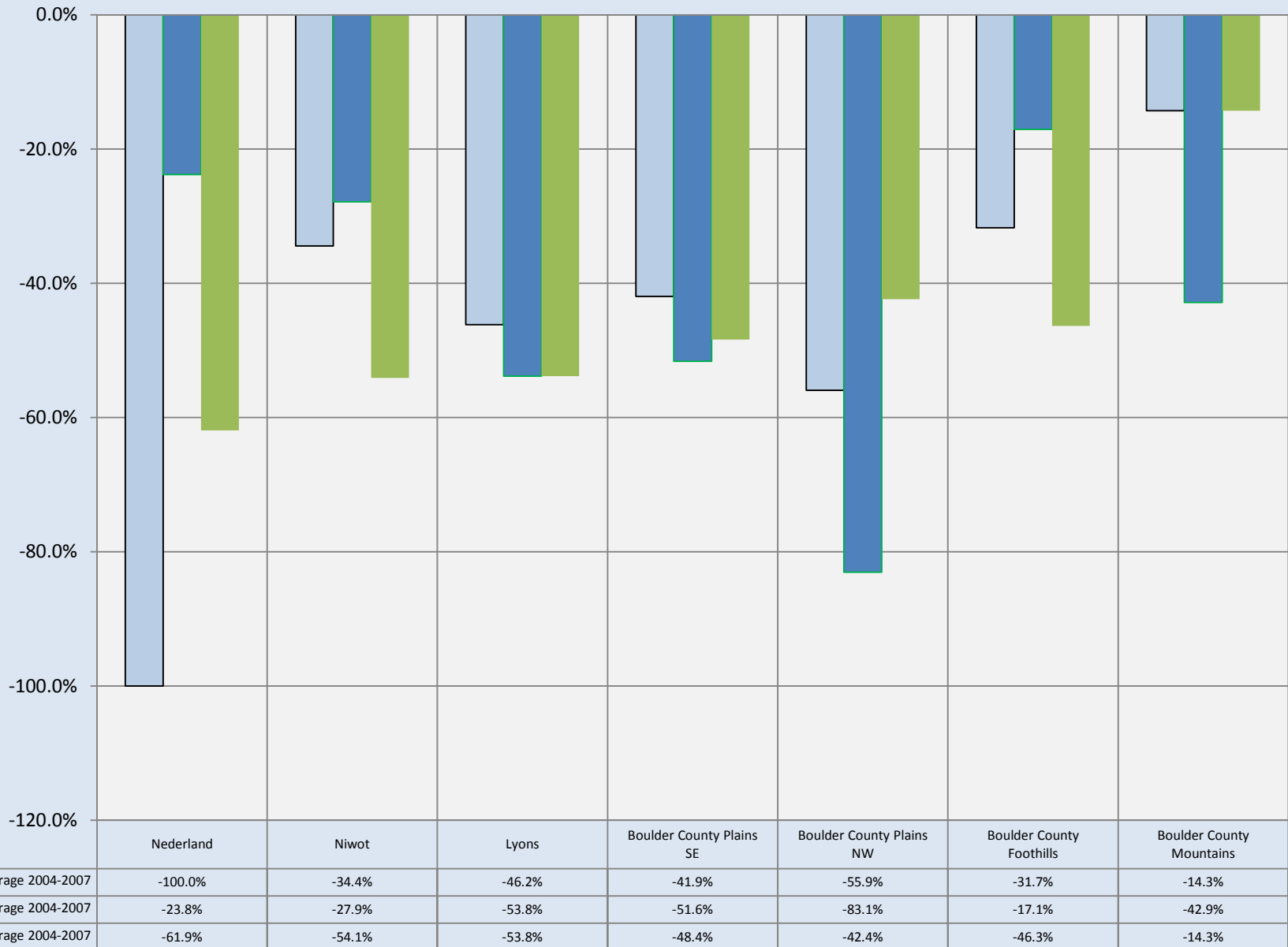


Number of Sales Large Houses: 2008, 2009 & 2010 vs Average for 2004-2007

All Recorded Sales: Data from Tax Records



Compiled by Agents for Home Buyers LLC

www.Agents4HomeBuyers.com

Data: Metrolist Tax/MLS & IRES MLS

Based on sales of 2300 -3000 sqft homes. Basement sqft not included in calculations.